

11. Amadeus

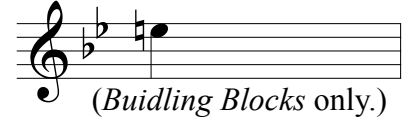
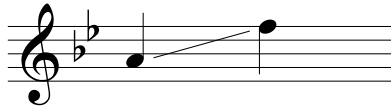
Style: Mozart inspired classical piece with broken chord accompaniment.

Virtuoso Part: The optional *Virtuoso Part* is an eight-measure etude style obligato, that fits over the first section of the piece. It is not present in the recording, but is featured in the video. (See pages 6 & 7 of this PDF.)

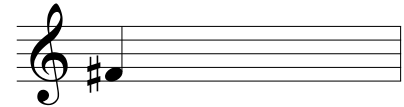
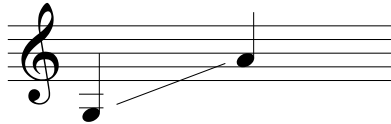
Range for *Band Arrangement*:

Accidentals:

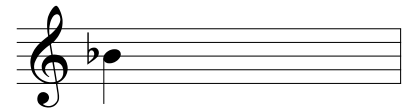
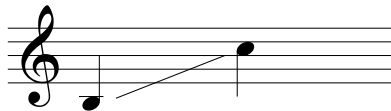
Flutes:



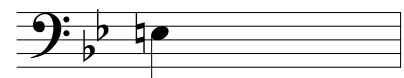
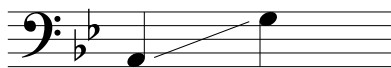
Clarinets:



Trumpets:



Trombones:



Sample of **Percussion III**, *Technical Snare and Bass Drum*:



Sample of **Percussion II**, *Easy Snare and Bass Drum* (May be played by 1 non-drummer):



II. Amadeus

Building Blocks

Adagio (in 2/2)
Half Note = Approx. 67 BPM

Composed and Arranged
by Steve Hommel

1 MELODY

Musical notation for the Melody part, measures 1-16. The notation is in 4/4 time and consists of four staves. Measure numbers 1 through 16 are indicated above the notes. Dynamics include *mp* (measures 1-4), *p cresc.* (measures 9-12), and *f* (measure 12). The piece concludes with a decrescendo (*decresc.*) and a final *p* dynamic in measure 16.

2 ACCOMPANIMENT

Musical notation for the Accompaniment part, measures 1-16. The notation is in 4/4 time and consists of four staves. Measure numbers 1 through 16 are indicated above the notes. Dynamics include *mp* (measures 1-4), *p cresc.* (measures 9-12), and *f* (measure 12). The piece concludes with a decrescendo (*decresc.*) and a final *p* dynamic in measure 16.

3 BONUS PART

Musical notation for the Bonus Part, featuring two embellishments. The notation is in 4/4 time and consists of a single staff. The first section is labeled "Embellishment #1" and the second is labeled "Embellishment #2". Both sections are marked with repeat signs and end with a fermata.

Bb Clarinet

II. Amadeus

Band Arrangement

Composed and Arranged
by Steve Hommel

Adagio (in 2/2)
Half Note = Approx. 67 BPM

1 2 3 4 5 6

mp

7 8 **A** 10 11 12

13 14 15 16 **B** 18

p cresc.

19 20 21 22 23 24

f decresc. *p*

C 25 **D** 30 31 32

mf

33 34 35 36

E 38 39 40 41 42

p cresc. *f decresc.*

43 44 **F** 46 47 48

p mp decresc.

49 50 51 52

p decresc.

II. Amadeus

Building Blocks

Adagio (in 2/2)
Half Note = Approx. 67 BPM

Composed and Arranged
by Steve Hommel

1 MELODY

Musical notation for the Melody part, measures 1-16. The notation is in 4/4 time and features a single melodic line with various dynamics and articulations. Measures 1-4 are marked *mp*. Measures 5-8 are marked *mp*. Measures 9-12 are marked *p cresc.* and *f*. Measures 13-16 are marked *decresc.* and *p*. The piece concludes with a double bar line.

2 ACCOMPANIMENT

Musical notation for the Accompaniment part, measures 1-16. The notation is in 4/4 time and features a single accompaniment line with various dynamics and articulations. Measures 1-4 are marked *mp*. Measures 5-8 are marked *mp*. Measures 9-12 are marked *p cresc.* and *f*. Measures 13-16 are marked *decresc.* and *p*. The piece concludes with a double bar line.

3 BONUS PART

Musical notation for the Bonus Part, measures 1-2. The notation is in 4/4 time and features a single melodic line with various dynamics and articulations. Measure 1 is marked *mp* and labeled "Embellishment #1". Measure 2 is marked *mp* and labeled "Embellishment #2". The piece concludes with a double bar line.

Amadeus, was inspired by the music of *Wolfgang Amadeus Mozart*. Mozart was one of the most important composers of all time. He lived from 1756 to 1791. He was a child prodigy, who performed music for the royalty of Europe from the time he was six years old.

Upper Register Clarinet

II. Amadeus

Band Arrangement

Composed and Arranged
by Steve Hommel

Adagio (in 2/2)
Half Note = Approx. 67 BPM

1 2 3 4 5 6

mp

7 8 **A** 10 11 12

13 14 15 16 **B** 18

p cresc.

19 20 21 22 23 24

f *decresc.* *p*

C 25 **D** 30 31 32

mf

33 34 35 36

E 38 39 40 41 42

p cresc. *f* *decresc.*

43 44 **F** 46 47 48

p *mp decresc.*

49 50 51 52

p decresc.

Virtuoso Clarinet

II. Amadeus

Band Arrangement

Composed and Arranged
by Steve Hommel

Adagio (in 2/2)
Half Note = Approx. 67 BPM

1 2 3 4
mf

5 6 7 8

A

10 11 12 13 14
mp

B

15 16 18 19 20
p cresc. f

C

21 22 23 24 25
decresc. p

D

26 27 28 29 30 31 32 33 34
mf

E

35 36 38 39 40
p cresc. f

F

41 42 43 44 46
decresc. p mp decresc.

47 48 49 50 51 52
p decresc.

Virtuoso Trumpet

II. Amadeus

Band Arrangement

Composed and Arranged
by Steve Hommel

Adagio (in 2/2)
Half Note = Approx. 67 BPM

1 2 3 4
mf

5 6 7 8

A
10 11 12 13 14
mp

B
15 16 18 19 20
p cresc. f

21 22 23 24
decresc. p

C **D**
26 27 28 30
mf

31 32 33 34 35 36

E
38 39 40 41
p cresc. f decresc.

F
42 43 44 46
p mp decresc.

47 48 49 50 51 52
p decresc.

Musical score for Amadeus - Band Arrangement - Page 4, measures 19-24. The score is written for a full band and piano/guitar. The key signature is B-flat major (two flats). The tempo and meter are not explicitly stated but are implied by the notation. The score is divided into measures 19, 20, 21, 22, 23, and 24. The dynamics are marked *f* (forte) at the beginning of each measure and *decresc.* (decrescendo) in the middle of each measure. The instruments and their parts are:

- Fl. Ob. (Flute/Oboe)
- Up. Reg. Fl. (Upper Register Flute)
- Bb. Cl. / Bs. Cl. / (T. Sax) (B-flat Clarinet / Bass Clarinet / Tenor Saxophone)
- Up. Reg. Cl. (Upper Register Clarinet)
- A. Sax. 1 (Alto Saxophone 1)
- A. Sax. 2 / B. Sax. (Bsn.) (Alto Saxophone 2 / Bass Saxophone)
- Bb. Tpt. (B-flat Trumpet)
- Up. Reg. Tpt. (Upper Register Trumpet)
- F. Hn. (French Horn)
- Tbn. Bar. (A. Cl.) / Tuba (Tenor Trombone / Baritone / Trombone / Tuba)
- Up. Reg. Tbn./Bar. (Upper Register Trombone/Baritone)
- Bls. (Bassoon)
- S. Cym. Tri. (Snare Drum / Triangle)
- S.D. / B.D. (Snare Drum / Bass Drum)
- Tech. Snr. B.D. (Technical Snare Drum / Bass Drum)
- Pno./Gtr. (Piano/Guitar)

The piano/guitar part includes the following chord progressions: Epsus4, Edim, Bb/F, F/A Adim Bb Adim, Bb.