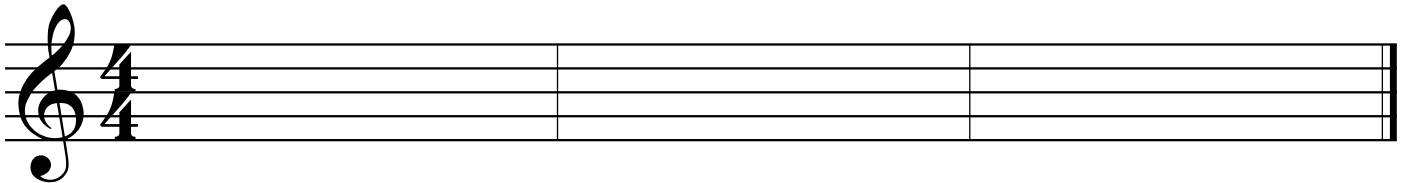
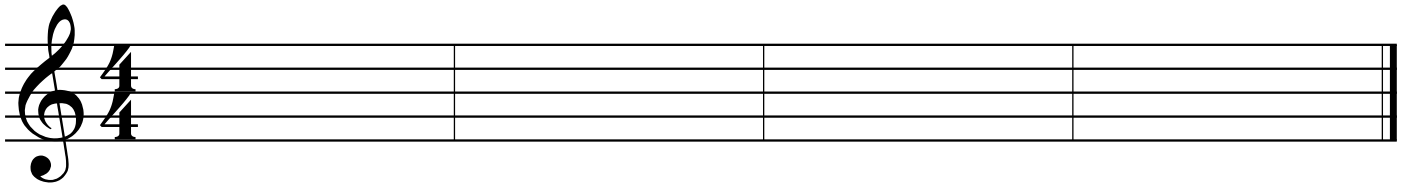


Write C, D and E.

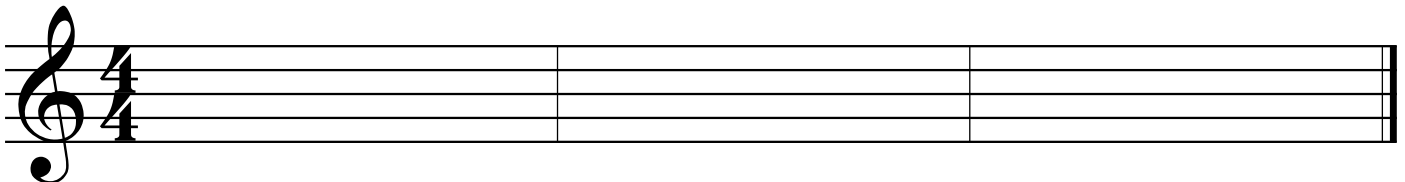
17 On the staff below, draw 12 **Quarter Notes** on the note *D*. Put 4 in each measure.



18 On the staff below, draw 4 **Whole Notes** on the note *E*. Put 1 in each measure.

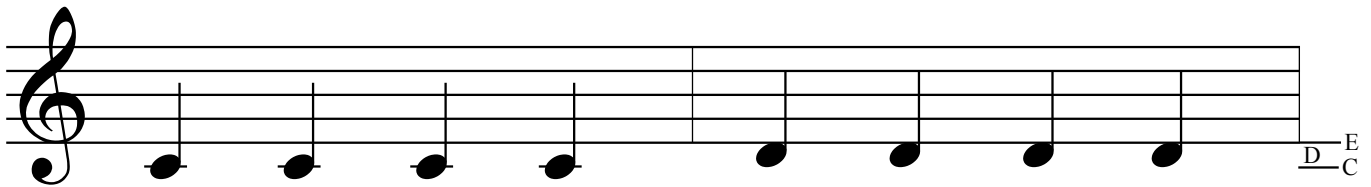
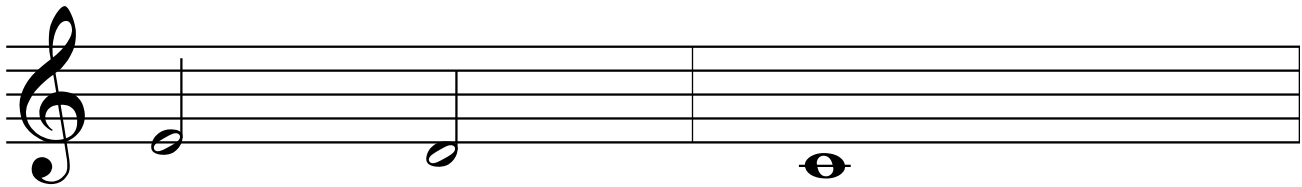


19 On the staff below, draw 6 **Half Notes** on the note *C*. Put 2 in each measure.



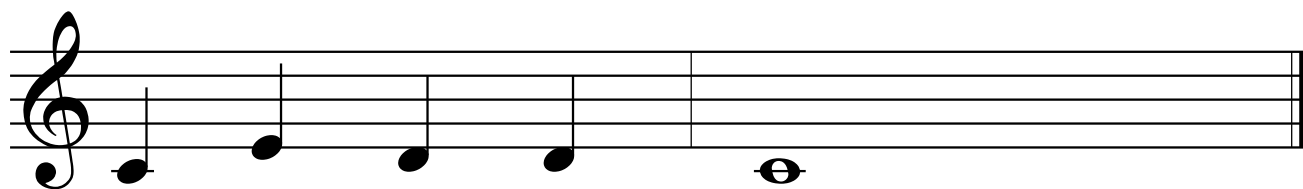
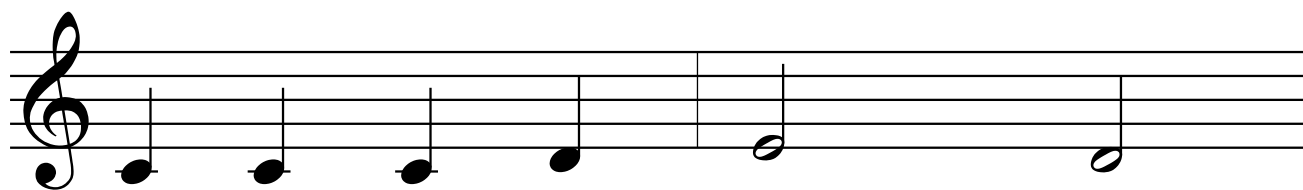
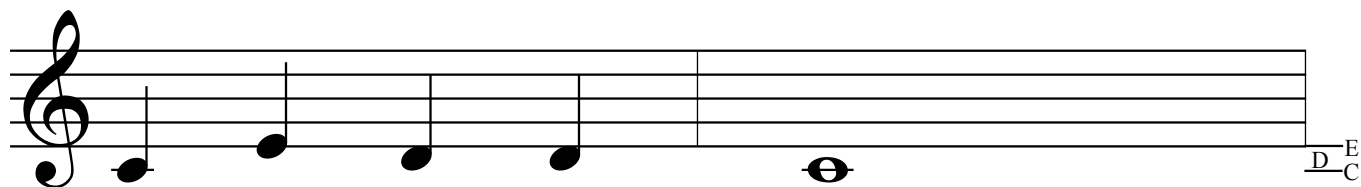
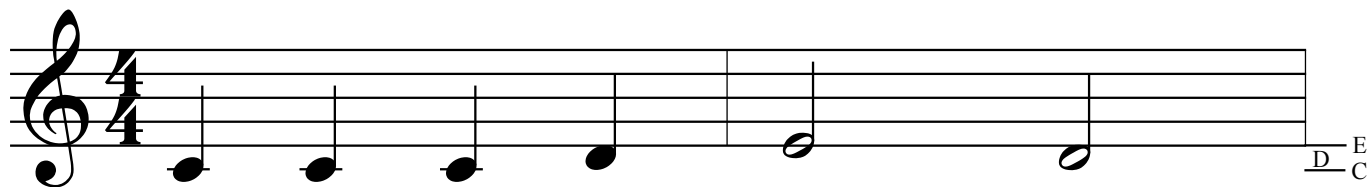
20 **Hot Cross Buns** with *Notes on the Staff:*

English Folk Song



21 **Au Claire De La Lune** *with Notes on the Staff:*

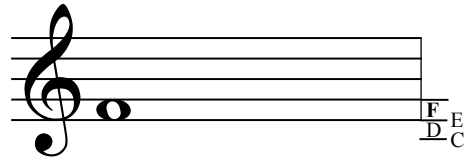
French Folk Song



22 Play an *F*:



23 The Note *F*, is written on the 1st space of the Staff.



24 Write the following notes for each measure:

4 Quarter Notes on an *F*. 2 Half Notes on an *E*. A Whole Note on a *C*.

A musical staff in treble clef with a 4/4 time signature. The staff is divided into three measures. The first measure is labeled '4 Quarter Notes on an F', the second '2 Half Notes on an E', and the third 'A Whole Note on a C'.

25 3 Types of Rests:

A musical staff in treble clef with a 4/4 time signature. The staff is divided into three measures. The first measure contains a whole rest, the second contains two half rests, and the third contains four quarter rests.

A Whole Rest gets 4 Beats. A Half Rest gets 2 Beats. A Quarter Rest gets 1 Beat.

26 Up a Tree

Steve Hommel

A musical staff in treble clef with a 4/4 time signature. The melody consists of quarter notes on G, A, B, C, D, E, F, G, followed by a quarter rest, then quarter notes on G, A, B, C, D, E, F, G, and finally a whole rest. The notes F, D, and C are labeled below the staff for reference.

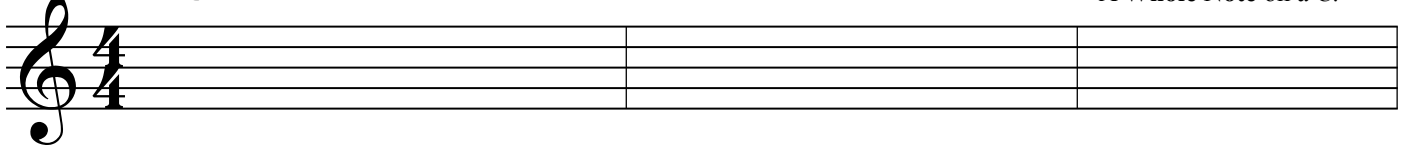
A musical staff in treble clef with a 4/4 time signature. The melody consists of quarter notes on G, A, B, C, D, E, F, G, followed by a quarter rest, then quarter notes on G, A, B, C, D, E, F, G, and finally a whole rest. The notes F, D, and C are labeled below the staff for reference.

27 Exercise 27 is
for flutes only.

28 Exercise 28 is
for flutes only.

29 Write the following notes for each measure:

4 Quarter Notes on an *E*. 2 Half Notes on a *D*. A Whole Note on a *C*.



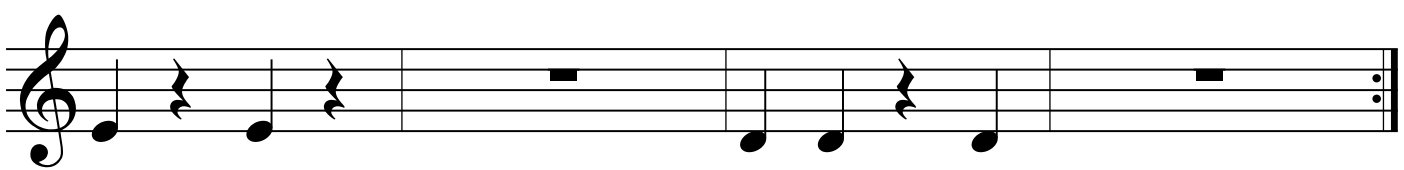
A musical staff with a treble clef and a 4/4 time signature. The staff is divided into three measures by vertical bar lines. The first measure is intended for four quarter notes on the pitch E. The second measure is intended for two half notes on the pitch D. The third measure is intended for a whole note on the pitch C.

30 Notes and Rests

Steve Hommel

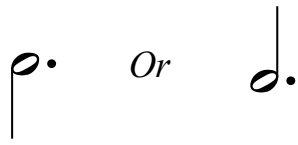


A musical staff with a treble clef and a 4/4 time signature. The staff contains four measures of music. The first measure has a whole note on C. The second measure has a half rest. The third measure has a whole note on C. The fourth measure has a half rest.



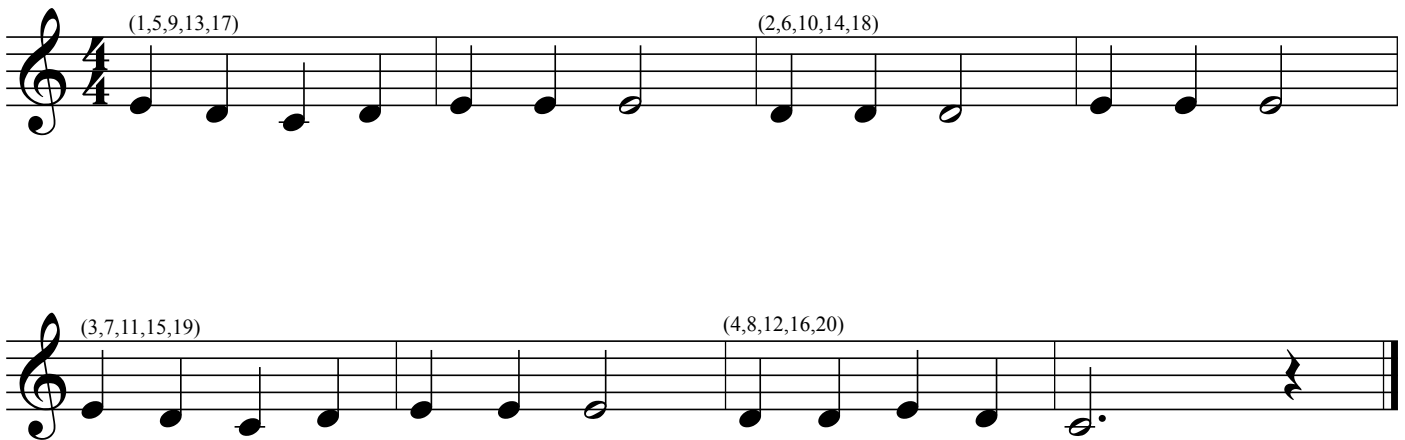
A musical staff with a treble clef and a 4/4 time signature. The staff contains four measures of music. The first measure has a quarter note on C, a quarter rest, a quarter note on C, and a quarter rest. The second measure has a half rest. The third measure has a quarter note on C, a quarter note on C, a quarter rest, and a quarter note on C. The fourth measure has a half rest.

31 *A Dotted Half Note gets 3 Beats:*



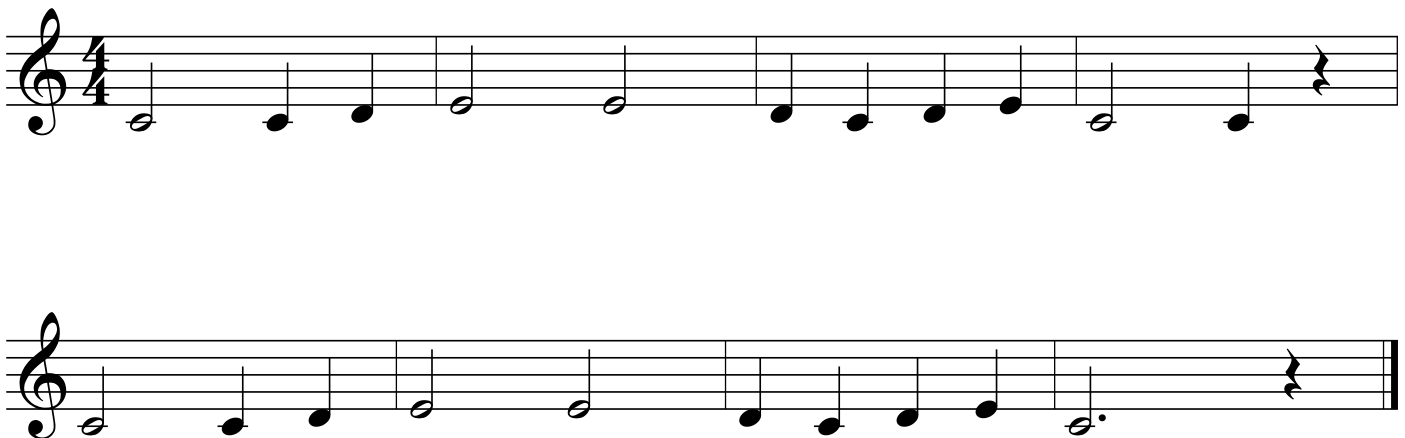
32 **Mary Had a Little Lamb**

Traditional



33 **Down by the Station**

Traditional

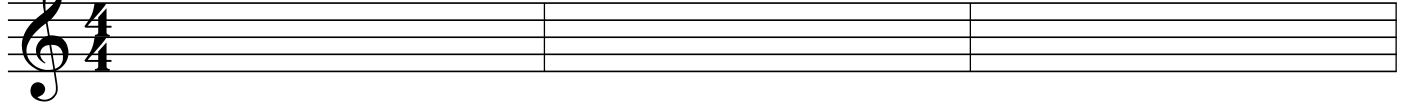


34 Exercise 34 is
for flutes only.

35 Exercise 35 is
for flutes only.

36 Write the following notes for each measure:

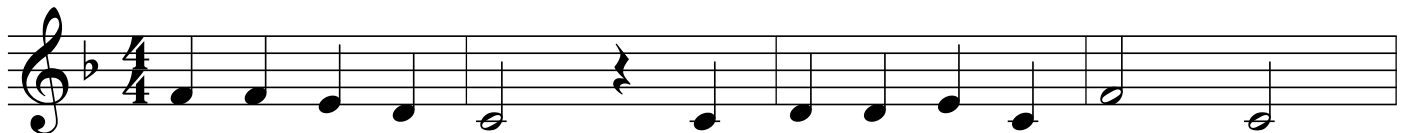
4 Quarter Notes on an *F* 2 Half Notes on an *E*. A Whole Note on a *D*.




The image shows a musical staff in 4/4 time, divided into three measures. The first measure is labeled '4 Quarter Notes on an F', the second '2 Half Notes on an E.', and the third 'A Whole Note on a D.'.

37 Country Walk

English Folk Song



The first staff of music for 'Country Walk' is in 4/4 time and B-flat major. It contains the following notes: F4 (quarter), G4 (quarter), A4 (quarter), Bb4 (quarter), C5 (half), D5 (quarter), C5 (quarter), Bb4 (quarter), A4 (quarter), G4 (quarter), F4 (quarter), E4 (half).

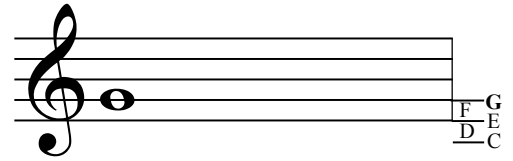


The second staff of music for 'Country Walk' continues the melody. It contains the following notes: D5 (quarter), C5 (quarter), Bb4 (quarter), A4 (quarter), G4 (quarter), F4 (quarter), E4 (half), D5 (quarter), C5 (quarter), Bb4 (quarter), A4 (quarter), G4 (quarter), F4 (quarter), E4 (half).

38 Play a *G*:



39 The Note *G*, is written on the second line of the Staff.

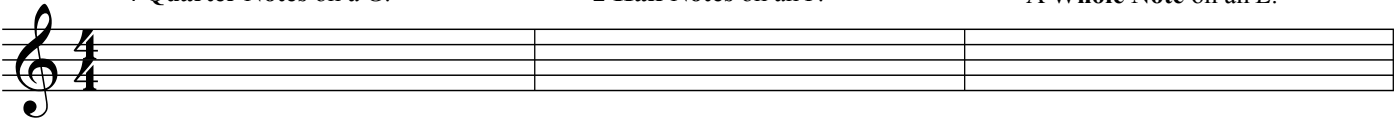


40 Write the following notes for each measure:

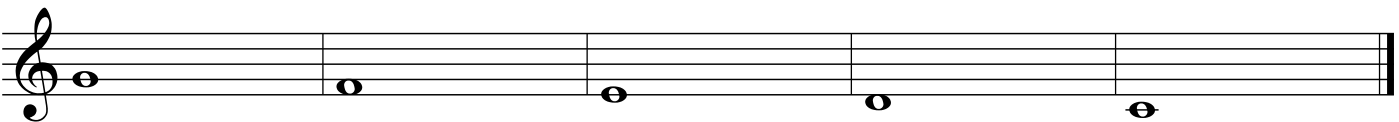
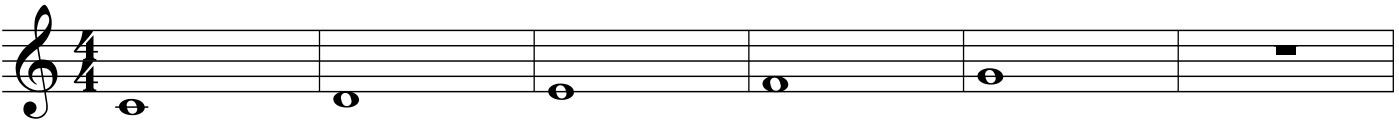
4 Quarter Notes on a *G*.

2 Half Notes on an *F*.

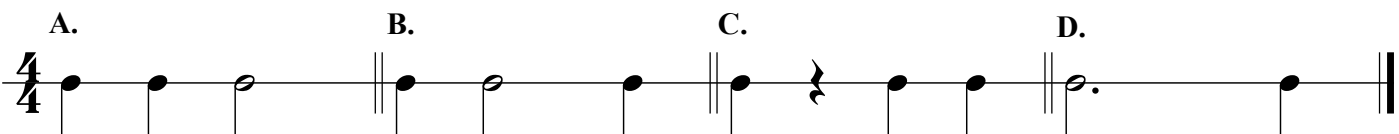
A Whole Note on an *E*.



41 Five Notes Up and Down



42 Rhythm Study (Play Exercise #41, substituting one of the rhythms below for each of the whole notes.)



43 Exercise 43 is for Brass Instruments Only.

44 Little Robin Red Breast

English Folk Song

Musical notation for 'Little Robin Red Breast' in 4/4 time, treble clef. The melody consists of 8 measures. Measure numbers 2, 3, and 4 are indicated above the notes. The piece ends with a double bar line.

45 Jingle Bells

Traditional Holiday Carol

Musical notation for 'Jingle Bells' in 4/4 time, treble clef. The melody consists of 16 measures. Measure numbers 2, 3, 4, 5, 6, 7, 8, 9, 10, 11, 12, 13, 14, 15, and 16 are indicated above the notes. The piece ends with a double bar line.