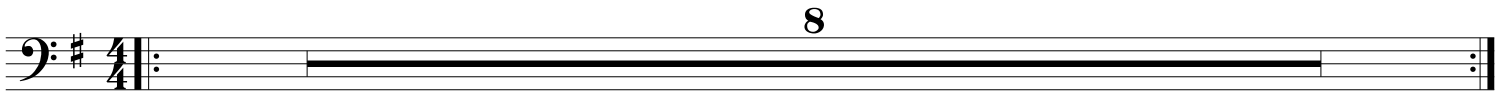


7. Theme from Canon in D

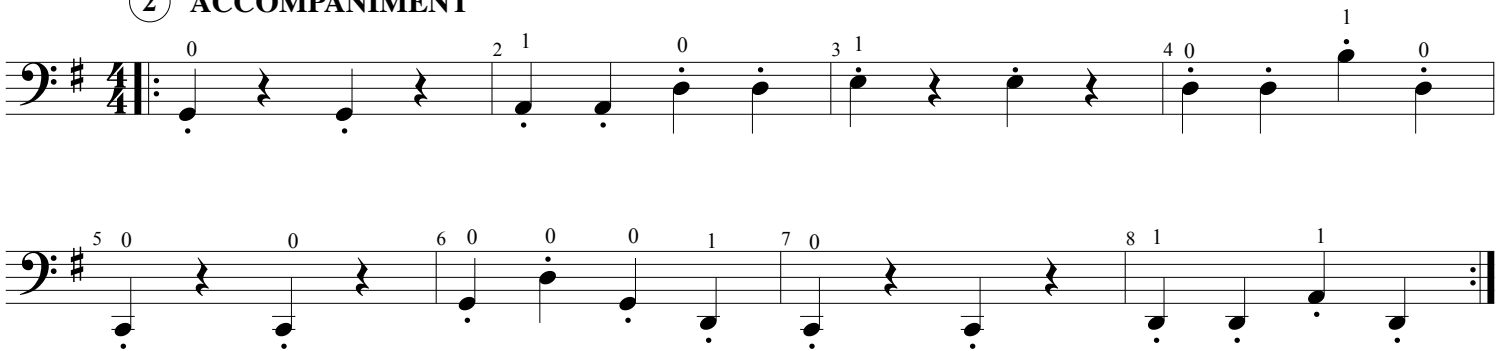
Building Blocks

By Johann Pachelbel
Arranged by Steve Hommel

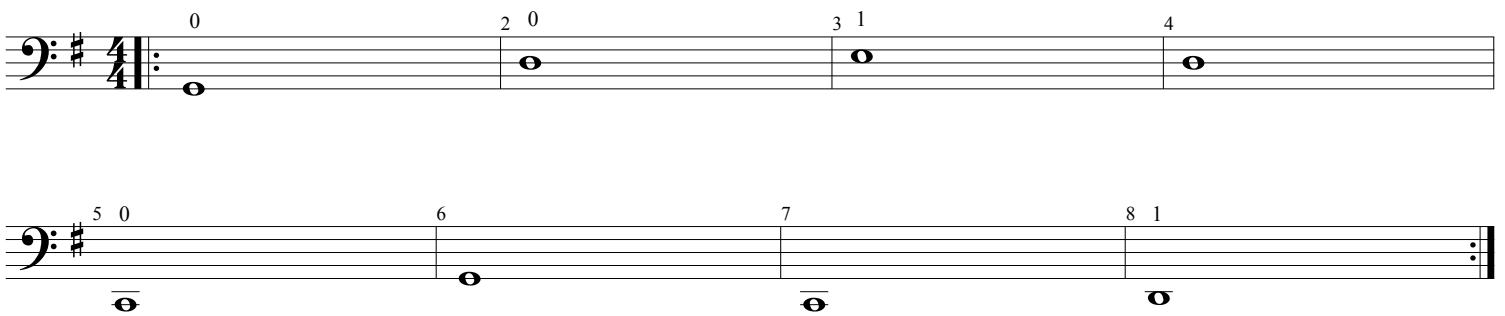
① MELODY



② ACCOMPANIMENT



③ BASS LINE



Johann Pachelbel (1653-1706), was a German Baroque composer, organist and teacher. *Canon in D* is his most famous composition. It is often used as a wedding processional. A canon is a sort of round in which different groups of instruments play the exact same music, but start at different times.

7. Theme from Canon in D

Concert Piece

By Johann Pachelbel
Arranged by Steve Hommel

A ♩ = 100
Optional repeat for Virtuoso Soloists. **8**

1-8

B

mp

13 0 14 15 16 1

C

mf

21 0 0 22 0 0 0 1 23 0 24 1 1

D

8

25-32

E

f

38 39 40 1 41 42