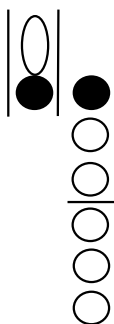


The Rubber Band!

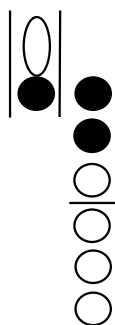
First Semester Workbook

Developed by
Steve Hommel

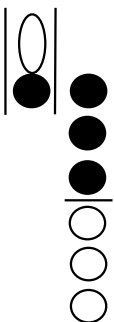
1 Play an *E*:



2 Play a *D*:



3 Play a *C*:



4 Hot Cross Buns

Follow your Band Director's tempo. Hold the notes through the dashes.

E - D - C - - -

E - D - C - - -

C C C C D D D D

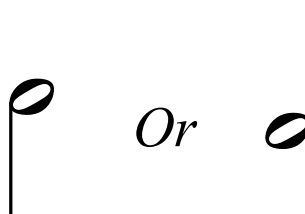
E - D - C - - -

3 Different Length Notes:

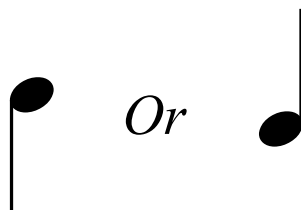
5 A *Whole Note* gets 4 beats:



6 A *Half Note* gets 2 beats:



7 A *Quarter Note* gets 1 beat:



Write Quarter Notes, Half Notes and Whole Notes:

8

What kind of note gets 1 count? _____

Answer

Draw four 1 count notes in the space below:

9

What kind of note gets 2 counts? _____

Answer

Draw four 2 count notes in the space below:

10

What kind of note gets 4 counts? _____

Answer

Draw four 4 count notes in the space below:

Hot Cross Buns with *Quarter Notes, Half Notes and Whole Notes:*

English Folk Song

4/4
E D C

E D C

C C C C D D D D

E D C

12 **Au Claire De La Lune** with *Quarter Notes, Half Notes and Whole Notes*:

French Folk Song

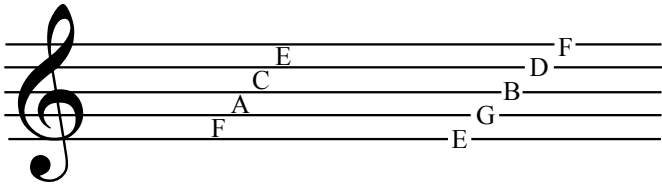
4/4
C C C D E D

C E D D C

C C C D E D

C E D D C

13 The Treble Clef Staff

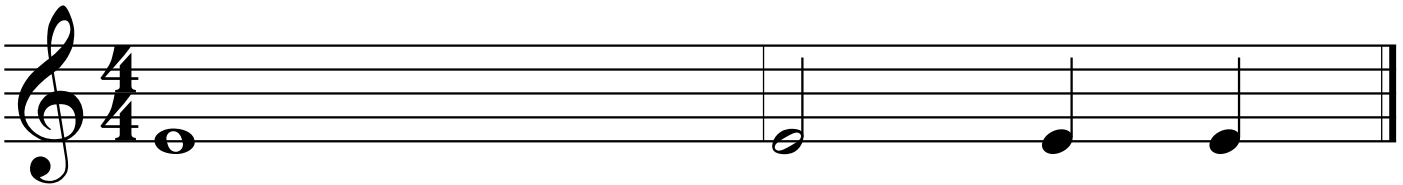


Notes are written on lines and spaces called the *Staff*.

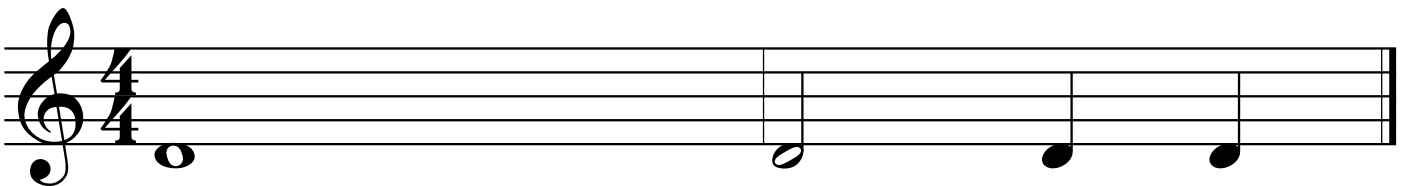
How many lines do you count in the staff? What are their letter names?

How many spaces do you count in the staff? What are their letter names?

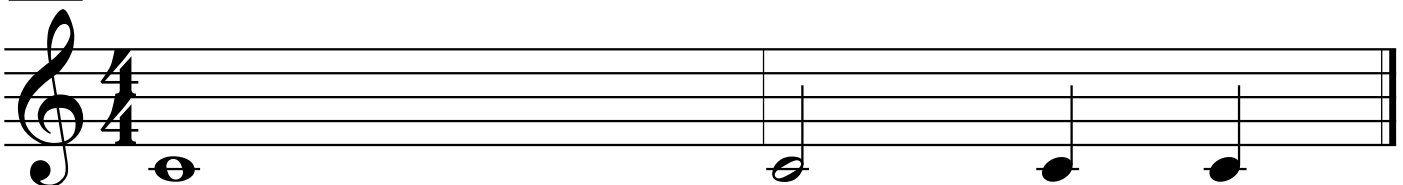
14 The Note *E*, is written on the first line of the staff. All of these notes are E's.



15 The Note *D*, is written below the first line of the Staff. All of these notes are D's.

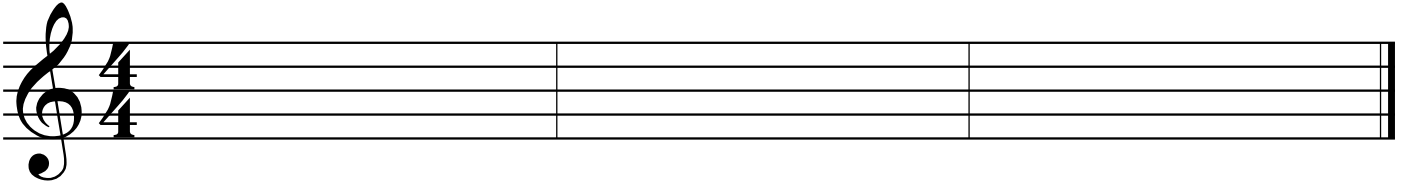


16 The Note *C*, is written on a *Ledger Line* below the staff. All of these notes are C's.

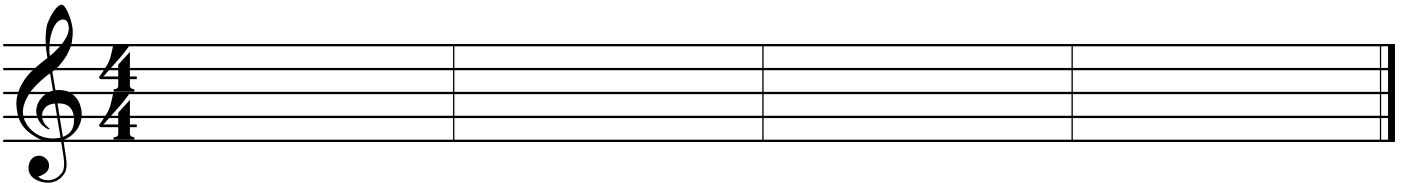


Write C, D and E.

17 On the staff below, draw 12 **Quarter Notes** on the note *D*. Put 4 in each measure.



18 On the staff below, draw 4 **Whole Notes** on the note *E*. Put 1 in each measure.



19 On the staff below, draw 6 **Half Notes** on the note *C*. Put 2 in each measure.

